



## August Monthly Newsletter

We're back with more exciting events!



August 24

**NEXT EVENT – Happy Hour  
at NEBCO!**

Please join us for a FY23 kick-off happy hour at New England Brewing Company (NEBCO)! Feel free to bring a friend/co-worker/significant other. Note that NEBCO is also dog friendly

When: Wednesday, August 24th

Where: New England Brewing Company (NEBCO), 175 Amity Road, Woodbridge, CT

Time: 5:30pm

# FY23 Officers

We are accepting nominations for our chair positions: social media, scholarship, and outreach. Please [email us](#) if interested by September 16 if interested.

Social Media Chair: Update and maintain Instagram and Facebook pages with upcoming events and announcements.

Scholarship Chair: Lead scholarship committee in Spring to review applications and coordinate celebration for recipient.

Outreach Chair: Coordinate STEM Outreach events with local communities (ex. Girl Scouts, local schools, etc.).



Emily Ng

President



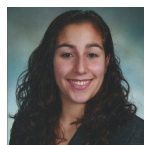
Lorraine Piccorelli

Vice President



Stephanie Gillespie

Treasurer



Carissa Hernandez

Secretary

## **VOLUNTEER/LOCAL 5K OPPORTUNITY – Sterling House 5K Obstacle Run**

\*Non-SWE CT sponsored event but we plan to have lunch at [Dockside Brewery](#) in Milford afterwards (formal calendar invite to come)!

Requesting volunteers and runners for the 9th Annual Sterling House Community Center Down & Dirty 5k Obstacle Run!

Location: Stratford Short Beach, 1 Dome Drive, Stratford, CT

### **Dates & Time:**

SET-UP DAY: Friday, September 9th, 2022 (morning)

RACE DAY: Saturday, September 10th, 2022 (check in opens at 8AM)

Contact: Emily Shufrin at [eshufrin@sterlinghousecc.org](mailto:eshufrin@sterlinghousecc.org) if you are interested in volunteering, or for any questions

Register before August 30th for a discounted entry fee (\$50) or \$55 from August 31<sup>st</sup> – Sep 8<sup>th</sup>.

Race information and registration can be found here:  
<https://www.sterlinghousecc.org/special-events/2022/9/10/2022-down-amp-dirty-5k-runwalk>

## FY23 SWE Conferences

Registration for WE22 in Houston, TX is now open! The conference will take place between October 20-22. Early bird pricing expires on 9/30/2022 and more information can be found at [we22.swe.org](http://we22.swe.org).

### **Volunteers Needed!**

WE Local is coming to Hartford in March 2023! The Local Host Committee (LHC) is now looking for members to join in the planning and execution of this upcoming event. There are lots of chances to help, both short term & long term, in-person and remote. If you are interested, please send an email to [Hartford2023LHC@gmail.com](mailto:Hartford2023LHC@gmail.com) with the following information:

Name

SWE Section/Affiliate/Group

Best email to contact you

Best phone to contact you

Type of commitment: short term/task oriented or long term

Are you planning to attend the Hartford conference in person (as of now)?

Your top 3 choices for subcommittee:

Social/Networking

Community Relations

Collegiate Competition

SWE Next

Programs

Partners/Sponsors

More information on what these subcommittees do is in this document: [2023 LHC CFP](#)

## MEMBERSHIP - Renewal for FY23

**FY23 began on July 1<sup>st</sup>, 2022 - It's not too late to renew your SWE CT membership!**

Being a SWE member provides access to benefits such as professional development resources, leadership opportunities, and reduced rates to SWE conferences. Being a paid member of SWE provides a huge benefit to our Section, regardless of if you'd like to take an active role in the Section.

Join or renew [here](#)! Check out our website at <http://ct.swe.org/>

## Support SWE CT

Ways to support our chapter

### Donation Matching

SWE CT is in the process of creating an endowment for our Annual Jean R. Beers scholarship and is actively seeking monetary support to establish this fund.

We are seeking your help!....Did you know that many Engineering companies provide **donation matching** based on monetary contributions or volunteer hours? Please consider including SWE CT in your annual giving plan.

### iGive

Donates a percentage of purchases from participating online stores to SWE CT without any additional cost to you!

Go to [iGive.com](http://iGive.com) and create an account, after you create an account select " Society of Women Engineers - CT" as your cause. There are two ways you can use iGive: you can go through the website and click on the stores you like to shop at or set up the iGive Button on Google Chrome which will recognize the companies that participate when you go to their website.

### Amazon.Smile

Donates a percentage of your purchases on Amazon to SWE CT without any additional cost to you!

If you use Amazon, instead of going to Amazon.com type [Smile.Amazon.com](http://Smile.Amazon.com) in your browser. Once you are logged in you can set your supporting organization to "Society of Women Engineers Connecticut". This can also be set up through your Amazon App!



**Society of Women Engineers**  
Connecticut Section

<http://ct.swe.org/>  
[swe.connecticut@gmail.com](mailto:swe.connecticut@gmail.com)

PO Box 1053  
New Canaan, CT 06840

You received this email because you signed up for our  
distribution list.

[Unsubscribe](#) | [Update preferences](#)

