

# Dragon Prints

*Drexel University Society of Women Engineers*

## Upcoming Events:

- **General Interest Meeting**  
Jan. 11 from 5-7pm  
LeBow 240
- **Ice Skating**  
Jan.13 from 1-3pm
- **Introduce a Girl to Engineering Day**  
Feb. 18

## Contents:

Nationals.....2  
 Nationals Cont.....3  
 Fall Term Recap.....4  
 Announcements.....5  
 About SWE.....6



## Letter from the Editor

Hello All,

This term has been just SWE!! From the National Conference in Houston, Texas to all the events a little closer to home, I had a great experience with SWE this fall and hope the rest of you did too!

One particular theme has resonated with me this term. Both the professional SWE members at the national conference and guest speaker Ms. Juli LaRosa spoke about “having it all.” Sometimes we spread ourselves too thin with school, work, and activities. All of these

successful and remarkable women stressed the importance of defining what “all” really means to you personally.

Once you figure that out, it gets easier to throw your energy into what really matters to you and still have time for relaxation! Saying “yes” to too many things can result in anxiety and poor performance in all of your endeavors. (Not to mention a lack of sleep.)

I have decided to focus my energy this next year on getting more girls and women involved in

engineering. As you make your new year’s resolutions, and set your goals for next term, I hope you define what “all” really means to you! Best of luck!

I hope you all have a wonderful holiday season, and look forward to winter term! Feel free to email [swe.drexel@gmail.com](mailto:swe.drexel@gmail.com) with any questions, comments, or suggestions!

*-Sam Schneider*

## Welcome New Officers

We’ve elected our New Officers for the 2013 year! Congratulations to the following officers!

**President**  
Claudia Gutierrez

**Vice President**  
Meaghan Paulosky

**Treasurer**  
Belinda Lester

**Secretary**  
Samantha Schneider

## Message from the 2013 Drexel SWE President

It is my pleasure to serve as your 2013 SWE president. I am a pre-junior in biomedical engineering and have been involved with SWE since my freshmen year. As a leader I am confident, passionate, and a firm believer in dreaming big. My vision for SWE is to become the most highly regarded organization on campus. As president of SWE my goal is for members of SWE to be perceived by other students, faculty, and co-op employers as individuals who excel socially, academically, and professionally.

*-Claudia Gutierrez*

## SWE National Conference 2013



**“3 Days of Energy, a Lifetime of Opportunity”**



This year’s conference was held in Houston, Texas from November 8-10 and boasted over 6,000 attendees. Those in attendance included both collegiate and professional women engineers, some even from across the globe. Attendees were accompanied by hundreds of speakers, volunteers and corporation representatives to make for a truly enriching weekend.

We began our time at the conference by attending the career fair, which featured over 200 companies, universities, and government agencies. It was a tremendous experience for networking. Two of our own even received on site interviews! The night concluded with a dinner at a local Mexican Restaurant with two Drexel Engineering Alumni and Drexel ASME members to round out the

### Congratulations!

**Communication Award**  
Drexel SWE received Second Place for Best Collegiate Section in Communication. This award signifies excellent communication within SWE and our community, keeping everyone informed and involved. Congratulations to Meaghan Paulosky, our

day of connecting.

Saturday morning we headed back to the George R. Brown Convention Center for a day full of inspirational speakers and workshops. Women from a variety of backgrounds and industries spoke to us in sessions with such titles as, “Speaking Powerfully,” “Hit the Job Running,” and “Emotional Intelligence.” During the day, we also attended a “Women Defining the Future Luncheon” for collegiate members. We were able to hear from four women of Northrop Grumman as they answered discussion panel questions regarding their individual journeys as women in engineering.



Our seats were intermixed with other collegiate sections, allowing us to discuss different events we host back at our respective colleges.

Saturday evening’s program was called “Celebrate SWE,” aptly named for an exciting dinner and awards ceremony. The dinner highlighted the accomplishments of many women and collegiate chapters.

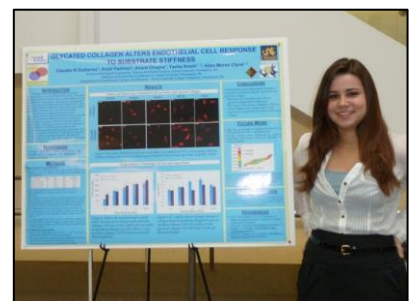
The weekend concluded with a dance party to celebrate everything we had learned about the industry and ourselves. Needless to say, us Philly girls sure know how to square dance.

Outreach Director, for helping us achieve this honor!

### Technical Poster

Claudia Gutierrez placed in the top ten for Undergraduate Technical Posters Competition. Claudia’s research was conducted in the Vascular and Kinetics

Laboratory, under Dr. Alisa Morss Clyne. She studied how the mechanical response of endothelial cells to their physical environment was altered in diabetic condition.



## SWE National Conference 2013, Continued



## Drexel National Conference Attendees

**Fariat K. Fuad**  
Sophomore  
Biomedical Engineering

**Ashley Kincaid**  
Sophomore  
Mechanical Engineering  
and Mechanics

**Belinda Lester**  
Sophomore  
Civil Engineering

**Samantha Schneider**  
Sophomore  
Environmental  
Engineering

**Meredith Bienvenue**  
Pre-Junior  
Architectural and Civil  
Engineering

**Claudia Gutierrez**  
Pre-Junior  
BS/MS in Biomedical  
Engineering

**Meaghan Paulosky**  
Pre-Junior  
Biomedical Engineering

**Colleen Guyre**  
Senior  
Chemical Engineering

**Margarette Hernandez**  
Senior  
Biomedical Engineering

**Cait McRae**  
Senior  
BS/MS in Chemical  
Engineering



***A special thanks to the College of Engineering and School of Biomedical Engineering for assisting in the funding of our trip to National Conference!***

We would also like to thank our 2012 officers: **Caitlyn McRae, Claudia Gutierrez, Brittany Preston, and Samantha Cowan**. These ladies helped to build up our chapter, developed solid communication methods, managed the budget and created the Speaker Series. In 2011, Cait and Claudia attended the National Conference alone. This year, thanks to their dedication, eight additional members were able to join them. Thank you for your commitment 2012 officers!

## Region- E and National 2013 Conferences

### Regional Conference

On March 8<sup>th</sup> Drexel SWE will be attending the Region E conference hosted by the DelMar Peninsula Section in Wilmington, Delaware. This year's theme is *Big Inspiration in the "Small Wonder" State of*

*Delaware*. The main goal for the conference is to facilitate connections between students, professional SWE members, corporate representatives, and members of the academic community.

### Nationals 2013

The SWE 2013 National

Conference will be held in Baltimore, Maryland from October 24-26. The theme is "Make Connections. Make History." Since 1950, women in the SWE have been making connections. Interested in attending either conference? Contact us today!



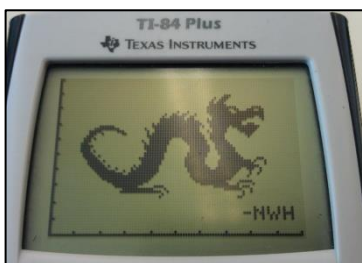


## Fall Term 2012 Event Summary

### Women and Leadership – 7 Secrets and What We've Learned Thus Far

Juli La Rosa, an associate clinical professor of the LeBow College of Business, left us with the following advice:

- |                               |                            |   |
|-------------------------------|----------------------------|---|
| 1. Find a Mentor              | 5. Balance Work and Home   | Take home message:<br>Define what having it "All" means to you and create it! |
| 2. Increase Visibility        | 6. Take Smart Risks        |   |
| 3. Learn Effective Networking | 7. Understand the Politics |   |
| 4. Communicate                |                            |   |



Visit

[www.drexel.edu/provost/dlc/](http://www.drexel.edu/provost/dlc/)  
to find out more about how  
to get tutoring!



*"Those who can, do.  
Those who can do  
more, volunteer."  
-Unknown*

## Surviving Engineering

It's no secret that engineering is hard. We have to learn about what actors in science fiction movies only pretend to understand, and we have to do it well. (People generally don't appreciate falling bridges.) This is why asking for help is never a bad thing. It doesn't mean you can't do it or that you can't be an engineer, you just need a push.

Sometimes it might be difficult to know how to ask for help. That's where Sa'eed Abdul-Khabeer steps in. As Assistant Director of the Drexel Learning Center,

it is his job to help Drexel students succeed.

If you feel as if you've hit the end of your rope and you just can't keep up in classes – he is your man. If you're stressed, overworked, or just flat out drowning in Greek letters and equations of motion, Mr. Abdul-Khabeer will help you get the job done.

In addition to the radiant Mr. Abdul-Khabeer, the Drexel Learning Center offers a list of tutors specified by subject. From there you can contact the tutor directly and get straight to work!

Drexel allots a certain amount of money, a very significant amount, every year strictly to expand resources for students. Jay Bhatt, Engineering Librarian manages this funding and makes sure that engineering students are never lacking information. Whether they be in the form of scientific journal subscriptions, copies of published studies, or registrations on resource databases, Mr. Bhatt's resources are inexhaustible and free for students to use! Make the most of them!

## Christmas Cards with ASME

SWE got in the holiday spirit when we paired up with Drexel's chapter of ASME (American Society of Mechanical Engineers)

to make Christmas cards for the Children's Hospital of Pennsylvania. Participants really enjoyed how this event allowed

them to relax, be creative, and give back to the community all at the same time!

## Upcoming Events and Announcements

### General Interest Meeting

New to SWE? Or just want to stay in the loop? Come to our general interest meeting on January 11 from 5-7pm in LeBow 240. We'll also play Scattergories with engineering terms. Prize for the winning team!!

### Ice Skating

Our first social event will be held on January 13 from 1-3pm. Cost will be \$7/person with rental included. Meet in Main Building lobby at 12:45.

### Speaker Series 1

Doreen Nixon from Lockheed Martin will come to speak about her experiences, her pathway, and challenges she has overcome along the way. Doreen is the director of Mission Systems and Sensors (MS2) at Lockheed Martin. Ms. Nixon will visit on January 23 at 5pm.

### Introduce a Girl to Engineering Day

On January 18, Drexel College of Engineering will host 150-200 middle and high school girls.

SWE will be running a 50 minute activity session throughout the day.

Interested in helping out at the station or with another part of the event? Email us at [swe.drexel@gmail.com](mailto:swe.drexel@gmail.com), and we will help you find a way to get involved!

### SWEllness

Let's face it...sometimes we engineering students spend a little too much time holed up with our computers. Luckily, next term our new wellness director, Meredith Bienvenue, will help to keep us healthy mentally and physically. Look for events next term like group yoga and study breaks with healthy snacks.

### Networking

Are you another club or organization? We would love to host an event with you!

### Calling all Grad Students and Alumni!

We are also looking for alumni and graduate students with whom we can form relationships. We would like to develop a mentorship program, in which we pair a current SWE member up with a graduate student or an alumnus that will help her along her career path. Correspondence between mentees and mentors will consist of mainly email. In addition, we will host several events for alumni, graduate students, and undergraduate students to network. If you are interested in mentoring, or would like to learn more, email our Networking Director, Fariel Fuad at [swe.drexel@gmail.com](mailto:swe.drexel@gmail.com)

### Membership

Not a member of national SWE? What are you waiting for? Becoming a national member is easy and well-worth the cost of \$50 for a collegiate membership, which lasts your entire college career. Being a national member gives you access to resources like the ability to apply for scholarships, get information on career and research opportunities, and a discount on attending the National Conference. In order to vote in officer elections, we require that you become a national member. In addition, this term national members received free t-shirts and swag bags.

For more information, email us, talk to our Membership director, Janette Danella, or come to the first general meeting on January 11!

### Want to get more involved or help to plan your own event?

Our directors (wellness, networking, membership, treasurer, and secretary) need chair positions and members to assist them. If you are interested in planning an event, becoming more involved in SWE, or learning what it is like to be an officer, let us know!



## Engineer's Week: February 18-23

To stay updated and receive invites to all our events, search **Drexel Society of Women Engineers (SWE)** on Facebook or scan this QR code to join our group!



Twitter more your thing?  
Follow us @DrexelSWE

If you would like to join our mailing list, shoot an email to [swe.drexel@gmail.com](mailto:swe.drexel@gmail.com)!

Email Us  
[swe.drexel@gmail.com](mailto:swe.drexel@gmail.com)



### Engineer's Week

Engineers Week, starting February 20<sup>th</sup>, is a nationally recognized annual celebration that "raises public awareness of engineers' indispensable contributions to all aspects of life". Drexel's College of Engineering has declared this year's E-Week theme to be energy and sustainability, and women in engineering. Drexel COE will participate in the celebration by hosting several engineering related activities such as an engineering career fair, Jeopardy! Drexel Engineering faculty edition, and student mixers.

### Introduce a Girl to Engineering

On February 18<sup>th</sup>, Drexel SWE will be participating

in the event called "Introduce a Girl to Engineering". We will host several 50 minute sessions throughout the day that will introduce over 100 high school girls to engineering. The goal of the session will for the high school participants to learn a skill related to engineering while connecting with female Drexel engineering students. Each session will be run by several SWE member volunteers. The volunteers will be talking to the participants about their experiences in classes, on co-op, and future career goals. This event will allow the high school girls to learn what their lives could be like 5 years down the road if they choose to pursue engineering.

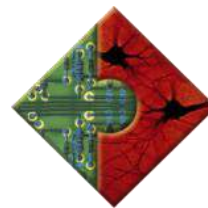
The group interaction is

expected to excite high school girls with the possibility of pursuing an education in engineering. SWE volunteers will also be able to answer any questions the high school participants may have about pursuing a degree in engineering.

### Volunteer Opportunity

In order to make this event possible we will need several volunteers! This is a great way to get involve in SWE. For freshmen, this would fulfill your UNIV 101 community service requirement. If interested please email [swe.drexel@gmail.com](mailto:swe.drexel@gmail.com).

## Thank you!



All photographs in this issue are credit to **Margarette Hernandez.**

### ***The National SWE Mission Statement***

*Stimulate women to achieve full potential in careers as engineers and leaders, expand the image of the engineering profession as a positive force in improving the quality of life, and demonstrate the value of diversity.*

**Drexel SWE**  
3141 Chestnut St.  
407 Main Bldg.  
Philadelphia, PA