



Drexel University Society of Women Engineers Fall Issue 2013

President's Message

Claudia Gutierrez

I would like to start by saying thank you for giving me the opportunity to serve as your SWE president. Serving as president has been my most rewarding experience during my time at Drexel, and it's because of everyone I have met along the way. I am honored to have worked alongside all of the SWE officers as I could not have asked for a more creative and talented team. They are truly the most outstanding women and engineers I have ever met. I am also very proud of our chapter for what we have accomplished since last fall. One year ago, the Drexel SWE section was restructured to clearly define our goals and enrich organizational identity. Since then, we have introduced over 200 young girls to engineering through our outreach programs, sent over 40 members to regional and national conference, developed a mentorship program for Drexel students, and hosted numerous workshops and panel discussions to develop our members professionally. Today, we boast the "Outstanding Collegiate Chapter" award on both a regional and national level.

A huge and special 'thank you' also goes out to our faculty advisor Dr. Alisa Morss Clyne for encouraging me to pursue a leadership opportunity in SWE three years prior. It was your encouragement that sparked my passion to stimulate young women to achieve to their full potential as engineers and leaders. As this fall term comes to an end, I look forward to seeing the new officers lead this powerful organization forward. Under the direction of our president-elect, Meaghan Paulosky, I know they will accomplish more than I could have ever imagined and continue to inspire young women to develop themselves into outstanding engineers and leaders.

In this Edition

President's Message	1
General Body Meeting	2
National Conference Workshops	3
Membership Spotlight	3
Wellness: Intramural Soccer	4
Mentorship Program	4
Teva Pharmaceuticals	4



**Look for our
next
newsletter:
National
Conference
Edition**



Over 100 girls attended the opening general body meeting.



Quizzo Winners

General Body Meeting

Fall term's first General Body Meeting was a huge success! With over 100 attendees, this was a great turnout for our organization!

The goal of the meeting was not only introduce Drexel SWE as a professional organization on campus, but also welcome many of these students as freshmen in the Drexel engineering curriculum. Much of the meeting was then spent guiding these new students toward the numerous online resources that are critical to a successful academic experience.

Focusing on DragonLink, BlackBoard Learn, and DrexelOne, attendees learned how to navigate through Drexel's online systems. A few specific topics included joining on-campus organizations, adding/dropping courses or viewing transcripts, and turning in electronic assignments. Officers and returning members networked with new members by introducing them to the Drexel SWE DragonLink page, Facebook, and Twitter accounts, subscribing to the SWE newsletter, and becoming a national member.

To emphasize that SWE encompasses professional and social benefits, the night concluded with a few rounds of Drexel SWE Quizzo! It was a great icebreaker and, frankly, very entertaining. The group activity and competition inspired the SWE officers to be a bit more creative in the next General Body Meeting.

Just a few weeks later, many of these attendees, and a few new faces, joined Drexel SWE in General Body Meeting 2: Scavenger Hunt Edition. Members learned about the many committees in Drexel SWE and how to get involved with each one while finding our officers in hidden locations throughout Drexel's many interconnected buildings.

Please keep reading your emails to find out more about our next creative General Body Meeting!

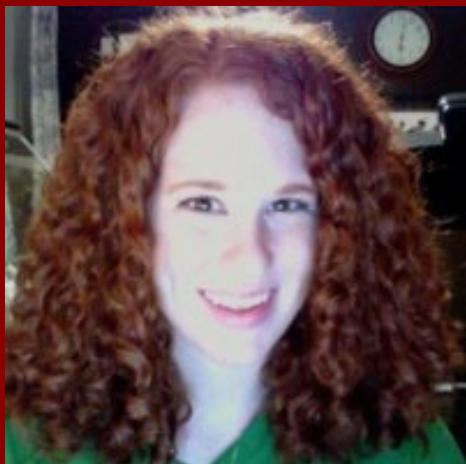
National Conference Workshops

In preparation for the 2013 Society of Women Engineers National Conference (WE13), two National Conference workshops were held to prepare Drexel SWE attendees. The first workshop was held on Tuesday, October 1st from 5:00 pm to 6:00 pm at the Lebow 240 (Hill Conference Room), and the second workshop was held on Wednesday, October 9th from 5:00 pm to 6:00 pm, also at Lebow 240. All twenty-five of the WE13 attendees participated in these workshops in anticipation of the valuable professional development opportunities available at conference.

Both of these workshops provided information on conference logistics, scheduling, as well as, resume critiquing opportunities for the WE13 Career Fair. During the workshops, resumes were peer reviewed and later revised by experienced, engineering professionals. Mses. Elisha Rios and Becky Urbano, both of Merck, and our very own Drexel SWE Counselor, Elizabeth Henning graciously volunteered to lead these critique sessions.

Preparation for National Conference and opportunities like these are given serious consideration by the Drexel SWE section as they directly apply to the SWE mission statement: "Stimulate women to achieve full potential in careers as engineers and leaders, expand the image of the engineering profession as a positive force in improving the quality of life, and demonstrate the value of diversity." Our academically and professionally diverse Drexel SWE members are always encouraged to explore their engineering career goals at events such as National Conference, and it is through adequate preparation that they are able to achieve them. Look out for our special National Conference edition newsletter to read about Drexel SWE's experiences at National Conference WE13!

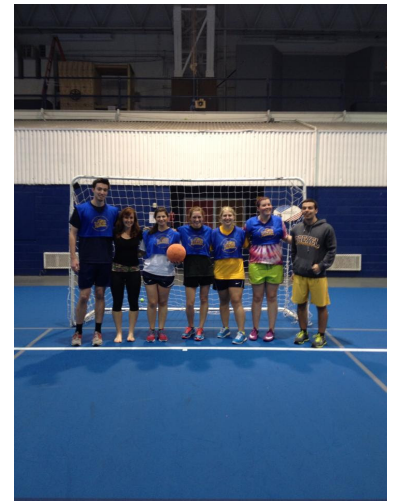
Membership Spotlight: Samantha Cassel



Samantha Cassel has been very involved with Drexel SWE over the last term. Her excitement to participate in Subject Matter Expertise Bowl at WE13 and her responsiveness to new members on the SWE Facebook group have portrayed her active role in SWE. Sam is also well-rounded outside of SWE. She currently coops as a clinical research assistant at Thomas Jefferson, stays active with Drexel's club softball team, and plays clarinet with Drexel's concert band.

Wellness: Intramural Soccer

Intramural soccer has been an excellent way for the Drexel SWE members to get to know each other in a fun and active environment - many are even learning a new sport! Working together to accomplish a short term goal (winning each game) really brings us together and seeing the amount of support we give each other on the field is heartwarming. We don't always win, but the experience is worth more than words can convey. Having an intramural SWE sports team is now be an ongoing activity. There will be a team for each term with a different sport! Join our team today by contacting Meridith Bienvenue at swe.drexel@gmail.com!



Fall Intramural Soccer Team

Mentorship Program

This Fall Term 2013 saw the official start of Drexel SWE's mentorship program. This multifaceted program pairs freshmen SWE members with upperclass members of the same major and areas of interest. Additionally, upperclassmen are then paired with female Drexel engineering alumnae. The program works to share knowledge across a range of engineering experiences, help freshmen adjust to life as a Drexel engineer, and assist graduating members in their transition from degree-seeker to degree-holder. Currently, there are 39 pairs involved in this program, and this number is planned to increase dramatically over the next year. If you are interested in mentoring a freshman or seeking an alumna as a mentor, email us at swe.drexel@gmail.com

Teva Pharmaceuticals

On October 3, 2013, Drexel SWE had the privilege and pleasure of hosting Teva Pharmaceutical Industries LTD. for an evening of insight and career advice for the competitive pharmaceutical world.

Teva Pharmaceuticals began in Israel in 1901 and has since expanded to more than sixty countries, with 46,000 employees and a strong portfolio of branded and generic products. One in every seven prescribed medications in the United States is a Teva product, marking them as the one the most influential companies in the healthcare industry.

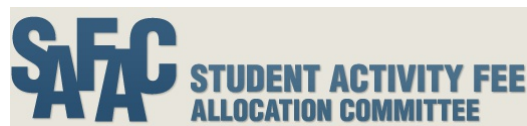
SWE was joined by several Teva representatives, two of which shared their appreciation for the Drexel co-op program and spoke about the need for competent, driven young professionals in the workplace. Karin Shanahan, SVP of Regional Manufacturing Operations, and Ellen McMahon, Human Resources Senior Director, are working to establish such experiential programs within their organization. Ms. Shanahan spoke specifically about the valuable role newcomers have in large organizations, especially as the pharmaceutical industry evolves and innovates. At Drexel, the co-op program is rooted in this mission for early innovation and proactive education. Our many thanks to Mses. Shanahan and McMahon, and the entire Teva team for their time and support!

Thank you!

Drexel University Society of Women Engineers would like to thank the following organizations for their support over the last academic term!

Air Products and Chemicals Inc.
The Boeing Company
Lockheed Martin
Comcast
Teva Pharmaceuticals

Techgirlz
Drexel College of Engineering
Drexel School of Biomedical Engineering
Student Activity Fee Allocation Committee



Your contributions help us inspire women in engineering!

Contact Drexel University Society of Women Engineers

Visit our website

<http://www.pages.drexel.edu/~dsoswe/>

Email us

swe.drexel@gmail.com



Join our Facebook group!
Drexel University Society of Women Engineers
at www.facebook.com/groups/drexelswe/



Do you prefer tweeting?
Follow us! @DrexelSWE



Drexel SWE
3141 Chestnut St.
407 Main Bldg.
Philadelphia, PA



Officer Positions

Claudia Gutierrez	President
Meaghan Paulosky	Vice President
Samantha Schneider	Secretary
Laura Worley	Treasurer
Fariyal Fuad	Networking Director
Emily Buck	Outreach Director
Janette Danella	Membership Director
Bhavika Gali	Professional Development Director
Meridith Bienvenue	Wellness Director
Ashley Kincaid	Networking Chair
Anna Lu	Public Relations Director
Neha Thomas	Outreach Chair
Angeline Aguinaldo	Outreach Chair
Jasmin Patel	Professional Development Chair
Melissa DuBois	Membership Chair
Savannah Lee	Treasurer Chair
Jackie Gerhart	SWE Community Liaison Chair
Danielle Schroeder	Social Media Chair
Katelyn Godfrey	Web Development Chair
Anita Ting	Website Chair
Kathryn Volk	Wellness Chair