



# Drexel University Society of Women Engineers Spring Issue 2013

## President & Vice President's Message

Hi everyone! I cannot believe that Spring Term has already come and gone. It seems like we were just wrapping up Regional Conference preparations and now we're getting names together for National Conference! With it being the last term of the Fiscal Year, we spent a lot of time compiling all of our work over the past twelve months. I am so proud of all our officers and members for everything we have accomplished! From our National Communications Award to our Regional Outstanding Section Award, this just might be one of our best! Even our events went above and beyond and laid the groundwork for some really exceptional programs we have coming up in the fall. Thank you so much for all of your hard work and involvement. Enjoy the summer!

*Vice President, Meaghan Paulosky*

This spring term has been especially trying for our section as several of our officers moved off campus to pursue their respective co-ops, myself included. It is wonderful that all the officers support each other's desire to continue being an active SWE officer despite relocations. I am proud to say that despite the distance and differing time zones we have established new and outstanding collaborations. This month we will be starting the first of many technical workshops for middle school students in collaboration with TechGirlz, an organization focused on "empowering girls to be future technological leaders". Later this month we will also be participating in an "Engineering Demonstration" with Drexel's College of Engineering to introduce engineering to over 100 middle school students. Drexel SWE's impact is moving off-campus. Now, if ever, is an exciting time to become involved.

*President, Claudia Gutierrez*

## In this Edition

President & Vice President's Message	1
Drexel Research Day	2
Philadelphia Science Festival	2
Philadelphia Robotics Expo	2
Gail Hansen From Boeing	3
Balancing Career and Life	3
Member Spotlight: Samantha Schneider	3
Science Fair	4
President's Message	5



Join our Facebook group!  
[www.facebook.com/groups/drexelswe](http://www.facebook.com/groups/drexelswe)

# Research DAY 2013

Research Day is an annual event at Drexel University, bringing together a spectacular array of research, innovation, scholarship, and creativity from both students and professors. On April 18th, dozens of young, promising researchers lined up to display their work in areas ranging from Biomedical Engineering to Creative Arts and Design. Drexel SWE students attended this valuable event to learn more about research opportunities available to undergraduates.

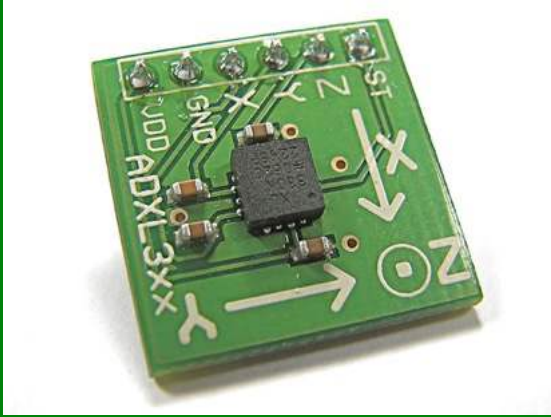
Crowds of judges gathered around one display titled: "Gender Differences in a School-Based Depression Intervention for Urban Youth." Another display across the gym challenged passersby: "What does Anti-Müllerian Hormone have to do with Lung Cancer?" Research such as this are just a small sampling of the work being done at the hands of driven students. Many Drexel SWE students take part in their own research, and have found great success in doing so. Expect to see their work in the very near future!

## Science Fair at Richard Allen Charter School

As a part of our outreach expansion, Drexel SWE recently visited a local middle school to serve as technical judges in their annual science fair. SWE members were joined by Drexel Material Advantage and the Boeing Corporation on Friday, May 10th at Richard Allan Charter School. The top twenty sixth and seventh grade contestants presented their projects, many of which were young girls learning about the scientific method for the first time, making this event especially SWE-ful! As judges, SWE members had the opportunity to ask the students questions and give them constructive feedback about expanding their projects in the future. Since the scientific method is a very important part of engineering projects, SWE members were also able to relate the middle school projects back to engineering projects completed on the collegiate level, actively promoting engineering as a profession.

The event was an excellent experience and a great, new way to reach out to younger students. Drexel SWE has now decided to pursue science fair involvement more frequently and will be returning to Richard Allan in Fall 2013, as well as the Future Cities competition.

# Philadelphia Robotics Expo



Three axis accelerometer attached under maze



A steel ball is run through the tilting maze

The Philly Robotics Expo is an annual event in which local robotics teams join Drexel and UPenn robotics groups to showcase their work and celebrate the robotics field. For the second year in a row, Drexel SWE took part and hosted a table to talk to young students about engineering and their role within it.

On April 22, nearly 500 students between grades five and twelve came to Drexel, eager to learn more about the power of robotics. Drexel SWE ran a small demo using the accelerometer tilt table maze, highlighting the challenges of precision and specification in design. Next year, Drexel SWE hopes to bring a more sophisticated robotic demonstration and expand the SWE presence within this event.

The event played a key role in showing students that robots and automated technologies are not always complex and out-of-reach, they only require the will and passion for pursuing it. In speaking with the students, SWE volunteers also benefitted by being reminded of just how exciting and fun technology can be!

## Member Spotlight: Samantha Schneider



Congratulations to our Secretary Samantha Schneider ('16) for winning the Marilyn A. Burshtin Memorial Award. This award is presented to a woman in the College of Engineering who has participated extensively in student activities and has a minimum GPA of a 3.0. Sam also received the Nicholas P. Pipino Memorial Scholarship for students who are eager to meet the realistic demands of the professional world. Congrats to Sam for all of her hard work and success!



On April 23rd, Drexel SWE was honored with Ms. Gail Hansen, V-22 Project Engineer, from Boeing. During her discussion, Ms. Hansen spoke about her career and different challenges she had to overcome while transitions from student to professional. Attendees also received many tips and advice about effective resume writing and establishing a presence within an occupational role. She shared the importance of having passion in a career and how that is what ultimately leads to success. As a strong and positive force within the industry, especially for women, she was able to offer herself as an example for always striving to reach ones fullest potential, then reaching for more.

Many people attended including SWE members and non-SWE engineers and two students from the local Science Leadership Academy. All attendees were grateful to have heard Ms. Hansen share her experiences and expressed interest in expanding the event. We look forward to hearing from Ms. Hansen again in future SWE events!

## Balancing Career and Life Guest Speaker: Jamie Angelastro

On May 9th, Drexel SWE learned more about the importance of a stable work-life balance and its relevance even before graduation. The event was small, permitting for discussion and personalized advice from speaker Jamie Angelastro. Jamie is currently a Project Management Consultant at The FlexPro Group. Previously she worked for Merck and Johnson & Johnson.

Jamie was also able to offer insight about being a better Drexel engineer. Being a Drexel Dragon herself, Jamie knows all about life on a ten-week system and taking midterms and final exams concurrently. Attendees felt that this event was extremely beneficial. Having a small group discussion made it more personable with Jamie, and many questions ranging from career to life issues arose. Jamie cleared any doubts regarding engineering schooling and careers by sharing her own struggles and how to best address them. She also provided highlighted the importance of co-ops and how that positively affected her, which was very encouraging.

A few helpful hints Jamie wished to share were to:

- Maintain a list of all your accomplishments
- Have an elevator speech at the ready
- Match job description key words to your resume

It was through these tips that Jamie was able to stimulate motivation and determination. Another key point of Jamie's was to always stand up and be unafraid of being bold. "In a male-dominated profession, it is too easy to stay quiet and blend in."

# Philadelphia Science Fair

The Philly Science Festival is an annual ten-day event held in April that attracts over 100,000 visitors as professional organizations and schools come together to showcase their field of interest, demonstrate experiments, and talk about what they love – science!

On April 20th, Drexel SWE took part by working alongside members of the Philadelphia SWE Section at the National SWE booth present at the Festival. The event is very much geared towards young children, largely between ages 4-12, to pique their interest in science-related fields.

Visitors were greeted with many hands-on activities and a wealth of scientific information offered by SWE volunteers. A heavy emphasis was placed on how quality of life can be dramatically improved with logic and a simplification of smaller tasks. For example, the SWE booth demonstrated how a balloon could be blown up with chemistry instead of physical exertion. Vinegar was added to an empty water bottle, and baking soda was added to the inside of a balloon. The balloon was stretched over the mouth of the bottle, and the contents were released into the bottle, causing a chemical reaction and releasing carbon dioxide, blowing up the balloon.

An incredible event for all, the Philly Science Festival will definitely continue to be one for Drexel SWE!



National SWE members and Neha Thomas



Benjamin Franklin and Neil Armstrong

## Senior Send Off 2013



From left to right: Anna Lu, Meaghan Paulosky, Margarete Hernandez, Colleen Guyre, Liz Henning, Cait McRae, Fariel Fuad, Ashley Kincaid

Congratulations to our SWE seniors on their graduation and best wishes on their post-graduate plans! You all have had such an incredible impact during your time as Drexel SWE girls, and will no doubt do the same as Drexel SWE alums. Best wishes to Cait McRae as she joins DuPont, Colleen Guyre at Honeywell UOP, Margarete Hernandez as a medical student at the University of Santo Tomas, Brittany Preston as she continues her work with the civilian sector of the US Navy! We are all so proud of you!

## Service Leaders Summit

On April 6, SWE members and officers joined dozens of other student leaders, faculty, professionals, and community organizers for the "Service Leader Summit." The summit, co-hosted by the Drexel Lindy Center for Civic Engagement and the Philadelphia Higher Education Network for Neighborhood Development (PHENND), invited guests to a day filled with community awareness and development.

The day started off with a few words from keynote speaker, Dr. Chuck Williams. Dr. Williams currently serves as an Associate Teaching Professor of Psychology at Drexel. Once a foster youth, he spoke about the need for consistent, positive mentors and what a tremendous impact they can have. As the founder of the Drexel Center for the Prevention of School-Aged Violence and a fellow at the Stoneleigh Foundation, Dr. Williams set the stage for the influential day. Dr. Williams was then followed by networking activities, learning sessions, and panels in which community leaders were able to present very real examples of civic engagement in the Philadelphia community. For example, one organization by the name of Poppyn (Presenting OUR Perspective on Philly Youth News) shared their remarkable work as a "youth-produced news show [presenting] perspectives and contributions of youth often missing from the mainstream media." Other sessions focused on the poverty of disadvantaged youth, understanding misbehavior, children as the future generation, negativity in society, and the role of slang in communication.

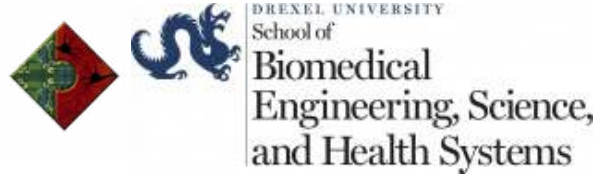
Guests were also honored with the opportunity to hear from four youths/young adults who were positively affected by the work of organizations such as a Poppyn. This panel shared their stories about rising above unfortunate circumstances and viewing goals as achievable outcomes, given the right tools. With outreach being a priority for Drexel SWE in the coming year, there could not have been a better way to kick off Spring Term. Much of the advice and lessons learned have already been utilized in our rapidly growing outreach programs, including our work with TechGirlz and area high schools.

Thank you to the Lindy Center and PHENND for this truly valuable day

# Thank you!



Drexel University Society of Women Engineers would like to thank Drexel College of Engineering and School of Biomedical Engineering, The Boeing Company, Air Products and Chemicals Inc., and the Student Activity Fee Allocation Committee for their support over the last academic term!



## Contact Drexel University Society of Women Engineers!

Email us

[swe.drexel@gmail.com](mailto:swe.drexel@gmail.com)



Join our Facebook group!  
Drexel University Society of Women Engineers  
at [www.facebook.com/groups/drexelswe/](http://www.facebook.com/groups/drexelswe/)



Do you prefer tweeting?  
Follow us! @DrexelSWE



**Drexel SWE**

3141 Chestnut St.  
407 Main Bldg.  
Philadelphia, PA



### Officer Positions

Claudia Gutierrez	President
Meaghan Paulosky	Vice President
Samantha Schneider	Secretary
Laura Worley	Treasurer
Farial Fuad	Networking Director
Emily Buck	Outreach Director
Janette Danella	Membership Director
Bhavika Gali	Professional Development Director
Meridith Bienvenue	Wellness Director
Ashley Kincaid	Networking Chair
Anna Lu	Newsletter Chair
Neha Thomas	Outreach Chair
Angeline Aguinaldo	Outreach Chair
Melissa DuBois	Membership Chair
Savannah Lee	Treasurer Chair
Jackie Gerhart	SWE Community Liaison Chair
Danielle Schroeder	Social Media Chair
Katelyn Godfrey	Web Development Director
Anita Ting	Web Development Chair