

## TABLE OF CONTENTS

---

Membership • Pg 2

---

Professional Development • Pg 2,3

---

Networking • Pg 3

---

Wellsness • Pg 4

---

Diversity & Inclusion • Pg 4

---

Outreach • Pg 5,6

---

MiSWEllaneous • Pg 6

---

Officers • Pg 7

---

Acknowledgements • Pg 8

---

## LETTER FROM OUR PRESIDENT

Welcome everyone, to our Spring 2022 Newsletter! Spring is always a bittersweet time of year as we say goodbye to our graduating seniors and welcome in our newly elected executive board and directors. This past term, Drexel SWE sent three members to the WELocal Buffalo conference, hosted numerous committee events, and had a record-breaking 8 outreach events in one term! I would like to congratulate all our officers and members for their hard work and dedication this term, as Drexel SWE would not function without all of you!



This term marks the first anniversary of our High School Mentorship Program. Our High School Mentorship Program leaders continue to brainstorm, network, and build a connected group allowing us to help high school women approach STEM fields in college. Other committees continued long-standing traditions such as the Mentorship Meet and Greet. This brunch is a chance for our professional mentors and mentees to get together and build relationships in a more personable setting. We also saw new events such as our Lessons of Da Land event with the D&I committee and the women in engineering panel with our new partner, NAVAIR. Overall, this term continued Drexel's SWE's goals of cultivating relationships internally and externally. Finally, we hosted our 2022 Senior Send-Off during GBM #2. An amazing and sad event as always, this event was especially bittersweet as I was among our many recognized seniors. It was amazing to celebrate my five years with Drexel SWE surrounded by amazing friends and inspirational women. Our seniors say our goodbyes, but know as well we will always be welcomed back in a professional capacity. Though it is sad for many of us to be leaving SWE full-time, our younger members will only continue to blow me away in accomplishments and goals. Drexel SWE will continue to excel under their leadership. Congratulations seniors, and all our members for the completion of another exceptional year!

**JILLIAN SAUNDERS**

 [swe.drexel@gmail.com](mailto:swe.drexel@gmail.com)

 [DrexelSWE](#)

 [@swe.drexel](#)

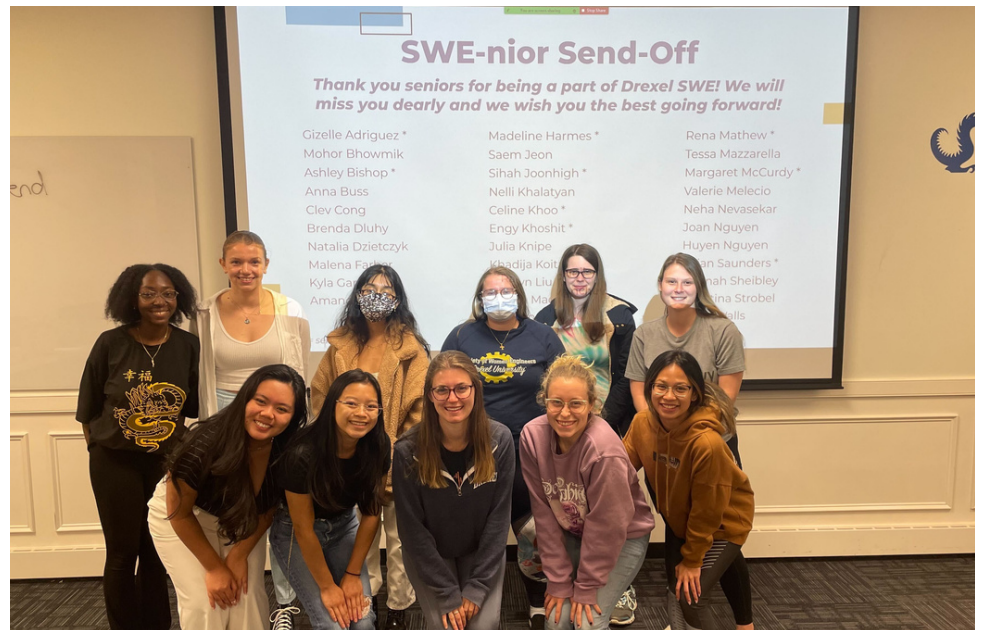
 [@drexelSWE](#)

## GBM #1

The first GBM of the term brought the Drexel SWE community together for some dinner and socializing while informing everyone of upcoming events and volunteer opportunities. Society level members were also encouraged to vote in the Executive/Director Position elections. The main event of the night was guest speaker and Drexel SWE Alumni Dani Schroeder! Dani taught attendees about personal finance and gave tips on budgeting and money management. Afterwards, each committee talked about their events and ways to get involved with Drexel SWE. The event finished off with the sale of newly-designed Drexel SWE swag and a group photo to commemorate the occasion!



## GBM #2 / SENIOR SEND OFF



The second GBM of the spring term was dedicated to recognizing the wonderful Drexel SWE Seniors with the annual Senior Send-Off. The event started by introducing our new Board for the 2022-2023 academic year. AAPI Heritage Month and Mental Health Awareness Month were recognized by providing members with events, resources, and organizations to get involved with. After committee updates, it was time to celebrate the seniors! Every senior that had been an active member was recognized with SWE graduation cords and previous officers also received a SWE stole. Some freshman-year photos were shown and multiple seniors shared words on the impact of Drexel SWE on their college experience. The event was capped off with photos of the seniors and the traditional group photo. The Membership Committee thanks everyone for coming to their spring term events, and thanks the seniors for the contributions to Drexel SWE!

# PROFESSIONAL DEVELOPMENT

## WOMEN IN ENGINEERING PANEL WITH NAVAIR



During the Spring Quarter, the Professional Development committee partnered with NAVAIR and their Women in Engineering group to present a panel to SWE members. In the panel, engineers shared ways to stay connected, opening up with an informational session about NAVAIR and what they look for in candidates. Then members had the opportunity to hear about the experiences and career journeys of two female engineers, one being a Drexel alumna. The event ended with a Q&A session and a promise of a future in-person event. The Professional Development committee thanks all who attended and asked insightful questions! They look forward to presenting more companies to SWE members in the upcoming year!

# NETWORKING

## MENTORSHIP MEET AND GREET

The Networking Committee was very excited to host their first in-person mentorship meet-and-greet session since 2019! Members of both the undergraduate and professional mentorship programs met for a Sunday morning brunch at The Board and Brew, conveniently located on Drexel's campus. Members of the programs were able to meet one another for the first time, catch up, and enjoy some great food. The Networking Committee looks forward to hosting more get-together events in person for the upcoming cycles of both the undergraduate and professional mentorship programs!



# WELLNESS

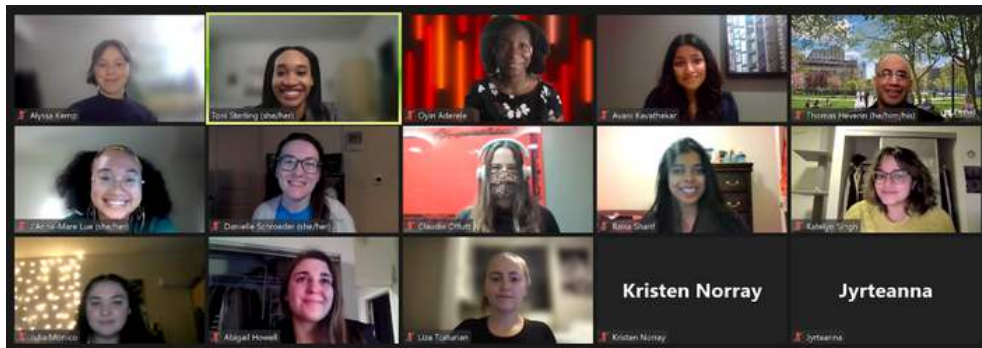
The (SWE)rving and Craft with Care events that the wellness committee had planned in hopes of getting their members moving were unfortunately canceled. These had the intention of helping members shake off some of the spring term stresses associated with finishing up freshman year, co-op applications, and exams. The Wellness committee thanks everyone for their continued support and for its events. They wish everyone a fun and eventful summer!



# DIVERSITY & INCLUSION

## CELEBRATING BLACK ENGINEERS

This spring, the D&I committee hosted a fun, informative, discussion-based event with Alexis Wiley, the creator of a 12-week co-curricular program titled “Lessons of Da Land: Food Sovereignty and Land Justice in Black Philadelphia”. The program focused on the history of community agriculture, food apartheid, and land tenure as well as the importance of understanding historical context in engineering. The event was informational for everyone and a success!



## BECOME A VOLUNTEER

SWE partnered with the Lindy Center to host a 'Become a Volunteer Event' earlier in March to help SWE members get their background checks. This event is crucial as it allows members to volunteer for SWE Outreach events in the future. Special thanks to the Lindy Center for continued help and support!

## 2022 HOT CHOCOLATE PHILADELPHIA 15K/5K EVEN

In April, Drexel SWE volunteered for the 2022 Hot Chocolate Philadelphia 15K/5K race day. SWE had a great time at the finish line handing out medals, water and electrolytes to the race participants. Having about 20 Drexel volunteers support the Philadelphia community through this event was a pleasure.



## CAPTIVATE 6.7.8



SWE rekindled old pre-COVID-19 partnerships and participated in Captivate 6.7.8, one of the Pre-College Access Programs. As part of this half-day event, SWE hosted a lotion demonstration. The students had a chance to learn about the chemistry behind lotion: emulsification. Overall, this event was enjoyable and relatable for the young students. Everyone had the opportunity to take their lotion home, which was exciting!

## STEM CONFERENCE FOR YOUNG WOMEN

For the first time since 2019, SWE participated in the STEM Conference for Young Women this past May. Through this event, high school girls learned about STEM and engineering through the different engineering demonstrations and the panel discussion. SWE hosted a new demonstration called Newton's cradle and taught the young girls about the physics behind Newton's cradle - Momentum. The girls enjoyed this demonstration and had the chance to keep their Newton's cradle!



## JUNIOR SOLAR SPRINT

The annual Junior Solar Sprint event is an event Drexel chemical engineering professors host in partnership with Philadelphia Solar Energy Association. During this event, middle school students raced shoebox-sized solar-powered cars. SWE had a fantastic time volunteering, helping with the race, and sharing information about SWE with the parents and students. It was awesome witnessing the creative solar-powered cars that the students designed as well as interacting with everyone and giving out free SWE merch!

# OUTREACH-HIGH SCHOOL MENTORSHIP PROGRAM

## INTRODUCTION TO ENGINEERING EVENT

On April 4th the Outreach committee held an Introduction to Engineering event for the mentors and mentees involved in the High School Mentorship Program. The event included multiple interactive demos for the mentees to choose from that related to different disciplines of engineering. The main goal of the event was to get the mentees excited about the different possibilities within engineering and help them to understand the different disciplines through hands-on learning. It was a lot of fun to interact with the students and see how creative they got with the different demos we participated in.

## COLLEGE SEARCH AND SCHOLARSHIPS WORKSHOP

The Outreach Committee hosted a College Search and Scholarship Workshop for the mentors and mentees involved in the High School Mentorship program on April 26th. The intent of the event was to help the mentees learn how to search for colleges they would be interested in applying to and provide them with tools to organize their application materials. There was also an information session where the mentors discussed what their own college search process was like and shared any tips they had for the mentees.

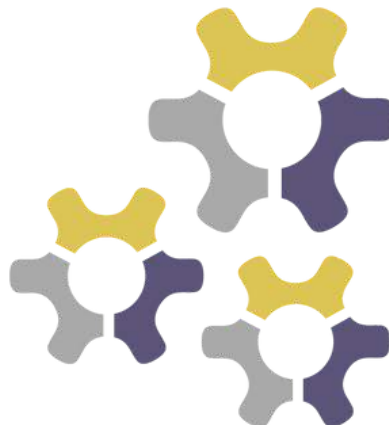
## GAME NIGHT

A Game Night was hosted on May 19th for those involved in the High School Mentorship Program. The event was the last event in the program's cycle and it was intended to just be a fun filled time! Different interactive games were played and the winners of the High School Mentorship competition were announced. It was a really fun event that brought everyone closer together!

## MISWELLANEOUS

### WELOCAL BUFFALO

This term three members of Drexel's SWE attended the WELocal Conference in Buffalo, NY. This conference creates a space for women in engineering to connect through professional development sessions, inspirational speakers, networking opportunities, and more. Be on the lookout for future conference events as they are a great opportunity to build connections and become more involved with the SWE community!



# SPRING 2022 OFFICER BOARD

Jillian Saunders	President
Celine Khoo	Vice President
Jyrteanna Teo	Secretary
Khadija Koita	Treasurer
Abby Howell	Membership Director
Jessica Jiang	Professional Development Director
Lizajane Bunyan	Outreach Co-Director
Samantha Seiden	Outreach Co-Director
Radiyana Mancheva	Wellness Director
Cailey Ruderman	Public Relations Director
Karli Akin	Networking Director
Toni Sterling	Diversity and Inclusion Director
Claudia Offutt	Membership Chair
Munazzah Al Hashim	Professional Development Chair
Feben Wolde-Semayat	Outreach Co-Chair
Khushi Patel	Outreach Co-Chair
Sarah Beyer	Wellness Chair
Emma Parnak	Treasury Chair
Doon Pappas	Public Relations Co-Chair
Daya Rao	Public Relations Co-Chair
Alyssa Kemp	Diversity and Inclusion Chair
Shaila Rao	Networking Chair

Directors serve for 4 quarter terms, beginning in the Summer.

Chairs serve for 2 quarter terms, beginning in the Winter or in the Summer.

Officer board applications are announced through our weekly member emails and social media posts. Societal membership is required to run and to vote.

# ACKNOWLEDGEMENTS

Drexel University Society of Women Engineers  
would like to thank the following organizations:

## PLATINUM LEVEL SPONSORS



## EVENT COLLABORATORS

NAVAIR

## DREXEL UNIVERSITY SUPPORT

Drexel College of Engineering  
Drexel Biomed  
Drexel Office of Alumni Relations