

TABLE OF CONTENTS

Exec & Membership • Pg 2

Treasury • Pg 2

Professional Development • Pg 3

Outreach • Pg 4

Networking • Pg 4

Diversity & Inclusion • Pg 5

Wellness • Pg 5

Officers • Pg 6

Acknowledgements • Pg 7

LETTER FROM OUR PRESIDENT

The wide variety of events occurring during a rather cold and dreary winter made this term all the more exciting. During the months of February and March, we recognized the challenges and celebrated the achievements of underrepresented individuals for Black History Month and Women's History Month. We also participated in Engineers Week during February 21-27 to showcase all things STEM.



This term we were able to plan 17 engaging virtual events, such as SWE Cooks, Technical Interview Workshops with IEEE, WiCS, and Fast Enterprises, Virtual Escape Room Game Night, and Sticking with STEM. Collaborating with a few organizations for Engineers Week, we hosted Women in Engineering Wednesday alongside I am ME and STEM Saturday alongside Material Advantage. For Women's History Month, SWE helped organize a screening of Picture a Scientist. We also are beginning a new initiative during General Body Meetings to better highlight our committees.

With all of this amazing work leading up to Spring Term, I am thrilled to see what the next few months will bring. SWE will be preparing to send off our seniors next term, welcoming a new Executive Board and team of Directors and Chairs, and much, much more. I want to remind everyone that the Society of Women Engineers is for YOU; if you have any ideas for events, collaboration, or if you want to get more involved, we are only an email away! Keep a look out for election forms and chair applications in the next few weeks.

As the weather gets warmer and COVID-19 vaccine distribution becomes more accessible, take this time to enjoy being outdoors and to safely spend time with family and friends. Congratulations to everyone for finishing up Winter Term--wishing you all a healthy and happy Spring!

ELVIRA-MARIE MIKHAEL



swe.drexel@gmail.com



[DrexelSWE](https://www.facebook.com/DrexelSWE)



[@swe.drexel](https://www.instagram.com/@swe.drexel)



[@drexelSWE](https://www.twitter.com/@drexelSWE)

GBM #1

For the first GBM of Winter term 2021, everyone got to meet our new directors and chairs. We talked about our upcoming events for the different committees and ways to stay involved with SWE. As well as recognizing our active members! For our D&I Moment, we highlighted and showcased the challenges and outlook of the STEM education and workforce. We discussed the numerous initiatives and scholarships opportunities available for students and professionals. At the end of our event, we took a group photo and did a speed-friending icebreaker game in breakout sessions!



GBM #2

During GBM 2, we introduced our very first Wellness Feature moment in which we began the meeting by taking a couple of minutes to reflect and relax. We also had so much fun showing off our upcoming events, recognizing our active members, and discussing important Black figures in recognition of Black History Month. Thanks to the support of Danielle Schroeder, our awesome Collegiate Counselor, SWE Senator, and former Drexel SWE President, we were also able to raffle off a College-to-Career SWE membership! We also raffled off some gift cards as a thanks to our members for all of their participation in SWE.

PICTURE A SCIENTIST SCREENING

In collaboration with the Pennoni Honors College for Pennoni Women's Week, SWE helped to organize a screening and moderated discussion of the documentary Picture a Scientist. This documentary tells the stories of several prominent female researchers, and brings to light the barriers they encountered, including cases of discrimination and harassment.

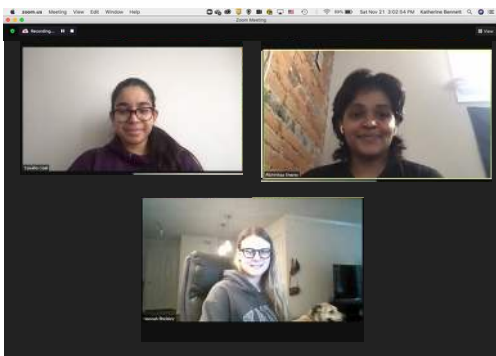
ENGINEERS WEEK: WOMEN IN ENGINEERING WEDNESDAY

For Engineers Week 2021, SWE teamed up with I Am ME to host a Women in Engineering Panel! The panel included 4 guest speakers all ranging from academia to industry in various engineering fields. Each panelist was invited to share their career journey and share some advice for students pursuing similar paths. During the event, the panelists shared the importance of finding a work culture that best suits you and to always advocate for yourself in the workforce. We are so grateful to have such strong role models within our community and thank them for all their time and effort they put into the event!

TREASURY

BYO-LUNCH WITH FUNDRAISING COMMITTEE

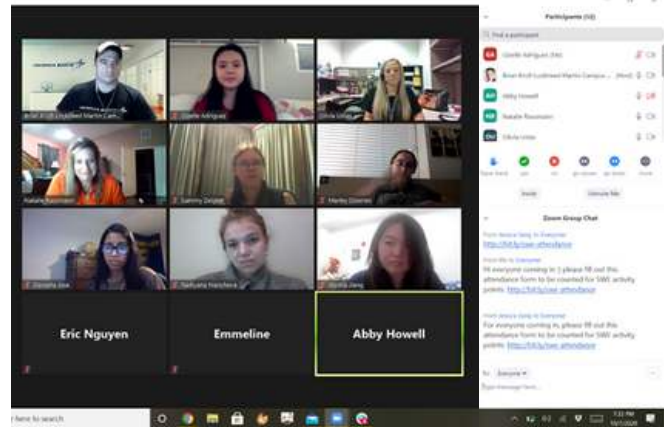
The quarterly fundraising committee meeting was held in the form of a BYO lunch event this winter term. Although fundraising efforts have been minimal due to COVID-19, the committee members engaged in meaningful conversations regarding campus life and virtual learning. The purpose of the quarterly meetings are to induct new members into the committee and familiarize them with the responsibilities associated with the group.



PROFESSIONAL DEVELOPMENT

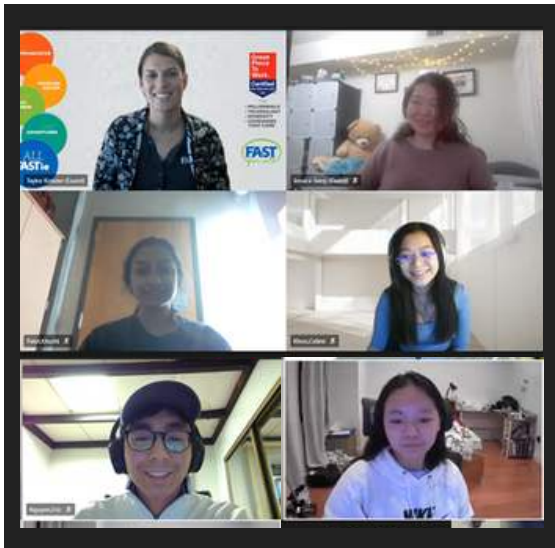
SWEXIEEE RESUME REVIEWS WITH LOCKHEED MARTIN

Fulfilling the promise from last quarter, the Professional Development Committee kicked off the quarter with resume reviews with a Lockheed Martin recruiter. Our members were able to sign up for a twenty minute one on one session with the recruiter to really pick out ways to make their resumes shine. We were lucky to be able to offer two full days of available time slots and glad that they were filled out. Thank you to Brian from Lockheed Martin for providing our members with this help!



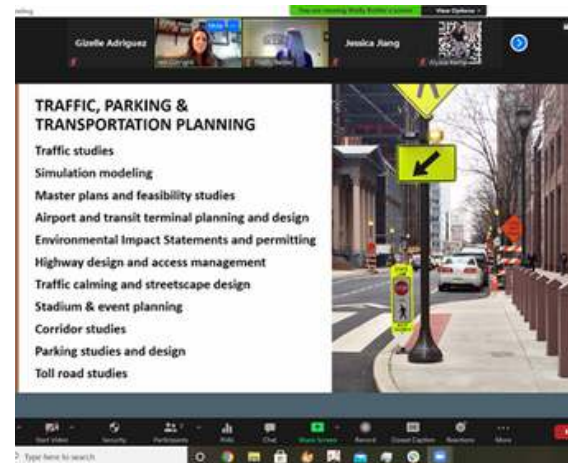
SWEXIEEEXWICS TECHNICAL INTERVIEW WORKSHOPS WITH FAST ENTERPRISES

This quarter, the Professional Development Committee held a technical interview workshop with Fast Enterprises during the Career Fair. The Fast Enterprises representative started off with a quick overview of Fast Enterprises and their specific interview process. We then transitioned into more technical interview practice with sample whiteboard and analytical type questions. The event concluded with questions and then we were able to take a group picture. Thank you all for attending and sharing your thoughts and answers!



LANGAN INFORMATION SESSION

Connecting students with companies they'd be interested in working for continues to be one of PD's priorities. This term, we were able to connect civil and environmental engineering students looking for co-op and post-graduate employment opportunities with Langan, a company focused on civil and environmental engineering and consulting. It was a great event starting off with an informational session by Langan, introducing the company on a more specific level to the SWE attendees before opening into a Q&A panel. Here, interested students had time to directly ask Langan recruiters essential questions about their opportunities as well as how best to apply for them. Thanks Langan and all who attended!



OUTREACH

BECOME A VOLUNTEER

Early in Winter Term the Outreach Committee held our Become a Volunteer event for members of SWE who are interested in participating in our many Outreach events where minors are present. During this event we went through the guidelines of obtaining Pennsylvania Background Checks on their own and assisted any members who had questions. Overall, we gained many potential volunteers from this event alone!

STEM SATURDAY

During Engineers Week at the Outreach committee partnered with Material Advantage to host STEM Saturday! For this event middle school students with interests in STEM fields were able to participate in interactive activities focused in Civil Engineering, Material Science, Chemical, and Biomedical Engineering. Using household materials students were able to take part in this event from their homes. These activities ranged from creating structures & towers, Non-newtonian Fluids, Chromatography Flowers, and Fruit DNA extractions!

NETWORKING

SPEED NETWORKING

The Networking Committee held a speed networking event towards the end of the term with some of the mentors from the Professional Mentorship Program. Everyone who joined was placed in breakout rooms with another participant for about 4-5 minutes, before moving on to talk to someone else. Each person had the chance to speak with everyone who attended! We provided a set of questions to help facilitate conversation, if needed.



VIRTUAL ESCAPE ROOM GAME NIGHT

The Networking Committee's second event this term was the virtual escape room game night. Everyone who joined was paired up and each pair went through a series of tasks to escape the first virtual room. If pairs finished up early, they were given the choice of completing a second virtual escape room or playing Skribbl.io with other pairs who finished up as well!



LINKEDIN & HANDSHAKE NETWORKING TIPS

The Networking Committee held a LinkedIn & Handshake Networking Tips event early in the term, lining up with B round for co-ops. We discussed tips for creating a strong profile on both platforms, as well as how to network efficiently and effectively. We focused on establishing and maintaining long-term connections. Another main topic we talked about was how to grow one's network, which is largely through finding more connections, interacting with content that your connections post, and posting consistently on your own page. Focusing on today's virtual environment, we also talked about the importance of attending virtual events and connecting with employers on LinkedIn after!

DIVERSITY & INCLUSION

STICKING WITH STEM

The Diversity and Inclusion committee started the winter quarter with a discussion based event focusing on improving STEM retention rates for the underrepresented in STEM. The event began with a short presentation on current STEM retention rates, and questions to guide the discussion. During the meeting, several points were raised about why retention rates for underrepresented groups are low and what SWE and Drexel can do to fix the problem. The event was successful, and the presentation contained a list of helpful resources to be shared with any and everyone which can be found here.

HEFORSWE AMBASSADOR WORKSHOP

The second event hosted by the Diversity and Inclusion committee was a workshop for our HeForSWE Ambassadors. The purpose of the event was to provide tips on how the ambassadors can continue to be great advocates for women and the underrepresented in STEM. Some of the topics discussed were, how to expand the program's outreach, advocacy talking points, how to be an advocate in the workplace, and how the HeForSWE committee can improve the structure of the ambassador program. The ambassadors that attended were receptive to the tips and provided with resources like SWE Advocacy modules and podcasts.

WELLNESS



TIME MANAGEMENT

Together with Drexel's Center for Learning and Academic Success Services (CLASS), Wellness and Professional Development hosted an informative workshop on how to utilize time effectively. Participants discussed myths about time management and were able to learn strategies to best manipulate their time. Thank you to Marissa from CLASS and everyone else who came to the event!

SWE COOKS!

Membership and Wellness paired up to do another SWE Cooks event, this time featuring a dutch baby recipe. It was so exciting to be able to cook breakfast virtually alongside so many SWE members and unwind from classes and co-op!



WINTER 2021 OFFICER BOARD

Elvira-Marie Mikhael
Jillian Saunders
Rhea Jain
Abinishaa Sivaraj
Celine Khoo
Gizelle Adriguez
Khadija Koita
Radiyahana Mancheva
Jyrteanna Teo
Karli Akin
Toni Sterling
Emmeline Kuochs
Jessica Jiang
Lizajane Bunyan
Samantha Seiden
Jillian McCarthy
Tanisha Goel
Cailey Ruderman
Doon Pappas
Alyssa Kemp
Shaila Rao

President
Vice President
Secretary
Treasurer
Membership Director
Professional Development Director
Outreach Director
Wellness Director
Public Relations Director
Networking Director
Diversity and Inclusion Director
Membership Chair
Professional Development Chair
Co-Outreach Chair
Co-Outreach Chair
Wellness Chair
Treasury Chair
Co-Public Relations Chair
Co-Public Relations Chair
Diversity and Inclusion Chair
Networking Chair

Directors serve for 4 quarter terms, beginning in the Summer.

Chairs serve for 2 quarter terms, beginning in the Winter or in the Summer.

Officer board applications are announced through our weekly member emails and social media posts. Societal membership is required to run and to vote.

ACKNOWLEDGEMENTS

Drexel University Society of Women Engineers
would like to thank the following organizations:

PLATINUM LEVEL SPONSORS



EVENT COLLABORATORS

Lockheed Martin
Fast Enterprises
Langan

DREXEL UNIVERSITY SUPPORT

Drexel College of Engineering
Drexel Office of the Provost
Drexel Biomed