

Upcoming Events/Meetings

October

Sunday	Monday	Tuesday	Wednesday	Thursday	Friday	Saturday
15	16	17	18	19 Lunch and Learn with Abbott 12pm CC TV room ThermoFisher Field Service Virtual Career Event 1:00-2:00pm virtual	20	21 Student Diversity Retreat 10:00am-5:00pm, CC
22	23	24 Negotiation skills 6:30pm DH310	25	26	27	28
29	30	31				
November						
			1	2	3	4

			Safety Keychains			
			6:30-8:30pm			

click on the titles to signup for the event

[Safety Keychains](#)

Join SWE for our third Safety Keychain event! Sign up for a 10-minute time block to make your keychain and learn how to use the safety items from Public Safety! Supplies are limited and provided in collaboration through SWE, Crochet & Knitting Club, and Raider 3D

[Adaptive Toy Build Day at Marquette](#)

Marquette is having an Adaptive Toy Build Day on November 4 and November 18 from 10am-3pm. Before the actual Toy Build Day, you will need to do a 1hr training at Marquette to learn how to modify a toy. The toy build event will consist of working with your team to lead 4-5 high school students to build the toys. If this is something that you are interested in, please fill out the google form. This will help us gauge interest to see if we can get a van.

[Abbott Lunch and Learn](#)

This is an info session on internship and co-op opportunities at Abbott for MSOE students. This presentation will be given by an MSOE student that has interned with this company for a couple summers. Please feel free to bring your lunch! The presentation will start around 12:15pm.

[T-Shirt Sale](#)

Interested in SWE Swag? Extra t-shirts from previous years are on sale for \$5! Limited sizes and quantities are available for each style. There may be additional sizes added periodically, based on what the form limiter allows, so please check back in or message Lexi Such, sucha@msoe.edu, on Teams with questions.

[SWE Crowdfunding for WE23 Los Angeles](#)

We need your support!

Conference registration fees are not covered by the university or any of our annual fundraising events. Registration fees are \$135 per student, not including transportation or accommodations – that’s why we need your help! If we could raise \$3,000, that would help us greatly to offset the cost and allow our officer board and members to attend the WE23 Conference. Reaching our goal would also enable us to extend the invitation to general members, increasing the impact on our organization.

Our goal of going to the conference is within reach but we need your support! Please help us get there by making a gift to our campaign. No amount is too small, and every gift will assist us in reaching our goal. We can’t wait to share with you what we learned at the convention and keep you updated on our progress until then! Thank you for your support!

SWE Committees

Collegiate Outreach

This committee is led by Gabby Scott. The focus of this committee is to plan social events that can provide a place of community.

K-12 Outreach

This committee is led by Dani Krogh. The focus of this committee is to find volunteers and plan K-12 outreach events, such as Hands on Future.

Company Connections

This committee is led by Michaela Haensgen. The focus of this committee is to work with companies to plan Lunch & Learns and more!

Fundraising

This committee is led by Lexi Such. The focus of this committee is to organize fundraising opportunities

HeForSWE

This committee is led by Thomas Benzshawel. The focus of this committee is to increase allies and promote diverse opinions.

To Join click on the link



Want to stay up to date with events?

follow us on [Instagram](#) and [Facebook](#)



Our Officers



Emma Leider
President



Bryanna Salazar
President elect



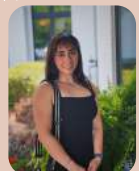
Michaela Haensgen
Vice President



Madison Roeber
Vice President elect



Katya Imas
Treasurer elect



Elliana Biggers
Treasurer



Elizabeth Reyes
Secretary



Lily Schellenbach
Secretary elect



Gabby Scott
Collegiate Outreach

Our Officers continued



Jenna Fabian
Collegiate Outreach Elect



Dani Krogh
K-12 Outreach



Gabby Sladek
K-12 Outreach Elect



Lexi Such
Fundraising Chair



Tiffany Trizna
Fundraising Chair Elect



Thomas Benzshawel
HeForSWE Chair



Zach Hemme
HeForSWE elect



Chloe Moran
Webmaster



Ellie Landy
Webmaster Elect

