

The Rocky Mountain Section of The Society of Women Engineers

## ANNUALLY AWARDS

# The Dorolyn Lines Scholarship



*Dorolyn Lines at her desk at the Bureau of Reclamation*

Dorolyn Lines was one of the charter members of the Denver Section of the Society of Women Engineers. Her tireless efforts helped the Section become dynamic and prosperous, evolving into today's Rocky Mountain Section.

The Rocky Mountain Section is proud to offer this scholarship in memory of Dorolyn Lines. She actively and enthusiastically encouraged women to be engineers and to achieve in their engineering careers. This scholarship will continue her efforts to help young women study engineering.

**Dorolyn Lines (1901-1975)** was born in Baldwin, Kansas on October 24, 1901. She was the youngest of four daughters of Dr. George A. Boyd and Jenny Lind Shelley. Higher education was important in her family with one of her sisters becoming a teacher and another a doctor. The family later moved to Colorado Springs where Dorolyn was educated.

Dorolyn graduated from the University of Kansas with a BSME degree in 1923. Following her graduation, she accepted employment with the Hassell Iron Works in Colorado Springs. She estimated, illustrated, and designed metal work including gears, fences and the lamp posts which still stand in the city. She returned to the University of Kansas Engineering College as an instructor for one year but declined the position of associate professor in favor of marriage in 1924 to Marion Brown (M.B.) Lines, an engineering classmate at the University of Kansas. Three daughters were born to this union.

Following her husband's death in 1934, Dorolyn Lines went to work for the federal government. In 1942, she accepted a position as a Canals Engineer in the Canals Branch of Design and Structures, Region 7, U.S. Bureau of Reclamation. During her time with the Bureau she worked on some of the largest canal and irrigation systems in the West. These included the Friant-Kern and Coachella Valley canal systems in California; the Wellton-Mohawk System near Yuma, Arizona; the Missouri River Basin, the Columbia River Basin and design work for modernizing the Lower Rio Grande Project in Texas. Her final project was a feasibility study for an irrigation system in the Grande Ronde project near Pendleton, Oregon. She retired from the Bureau in December 1966.

In 1966, she received a Certificate of Merit from the Bureau of Reclamation "In recognition and appreciation of the extra personal effort and special service rendered in activities, outside of assigned duties, which have brought recognition, credit , and added prestige to the Bureau of



Reclamation." She was also commended by the Federal Civil Service Commission and the Reclamation Technical Club for her cooperation with Colorado colleges and universities in encouraging women to enter her field. She died January 16, 1975 following a lengthy illness.

*Dorolyn at the lathe at the Hassell Iron Works in Colorado Springs, Colorado.*

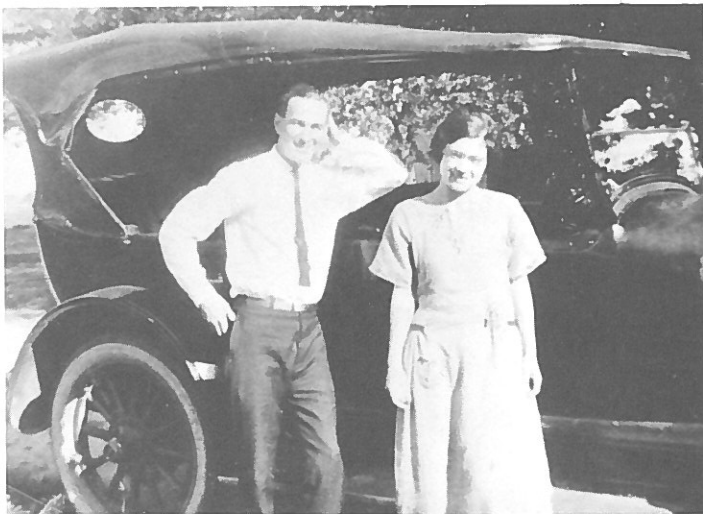


*Dorolyn as a young woman*

Dorolyn Lines was one of the eight charter members of the Denver Section of the Society of Women Engineers which was granted a charter in February 1954. She was an active and dedicated Senior member of SWE, and served the Denver Section as its second Chairman, and also as Secretary, Treasurer and Section Representative. Her national SWE activities included Executive Committee member; Chairman, National Affiliations Committee; Chairman, Affairs Committee; Awards Committee member; Nominating Committee member, and the Scholarship Awards Committee member.

She was a registered professional engineer and an active member of the Colorado Society of Engineers. Dorolyn was one of the first two SWE representatives to the Colorado Engineering Council (CEC) to which the Denver Section of SWE was admitted in 1961. She was the first woman engineer elected to the CEC Board of Directors. She also represented the Denver Section as the SWE Representative to the Engineers' Building Company Board of Trustees.

The contributions which Dorolyn made to the Denver Section, from the formation of the charter, through every subsequent SWE activity, were total support and participation. To everyone, Dorolyn always was a friend and an unassuming professional. These personal qualities were foundation stones for the growth of the Section from the first meeting of intent to organize and did much to help the Section members to continue to grow professionally and the Section to grow as an organization.



*M.B. and Dorolyn Lines*



*M.B. Lines*

## **The Society of Women Engineers**

The Society of Women Engineers is a non-profit educational organization established in 1949-50 with the following goals and objectives:

- Inform young women, their parents, counselors and the general public of the qualifications and achievements of women engineers and the opportunities open to them.
- Assist women engineers in readying themselves for a return to active work after temporary retirement.
- Serve as a center of information on women in engineering.
- Encourage women engineers to attain high levels of education and professional achievement.

The Society's mission statement is to:

- Stimulate women to achieve full potential in careers as engineers and leaders,
- Expand the image of the engineering profession as a positive force in improving the quality of life, and
- Demonstrate the value of diversity.

## **The Rocky Mountain Section**

The Rocky Mountain Section of the Society of Women Engineers was established as the Denver Section in 1954 and renamed in 1986. The Section began collecting funds for its Endowed Scholarship Fund in 1984. The Dorolyn Lines Scholarship was established in 1990.

Candidates for the Dorolyn Lines Scholarship are rising junior and senior female engineering students at the engineering colleges in Colorado and Wyoming. They are selected on the basis of: engineering achievement; leadership of organizations, societies, and activities; essay; academic skills; two letters of reference; and financial need. Engineering achievement includes papers, projects, research, and relevant work experience. Academic skills include curricula, grades, and scholastic achievement.

For more information, please contact:

SWE-Rocky Mountain Section  
P.O. Box 260692  
Lakewood, Colorado 80226-0692  
(303) 893-0822

Information on the scholarship programs of the Society of Women Engineers may be obtained from Society Headquarters:

Society of Women Engineers  
345 East 47th Street  
New York, NY 10017  
(212) 705-7855